

# VR Study Meeting

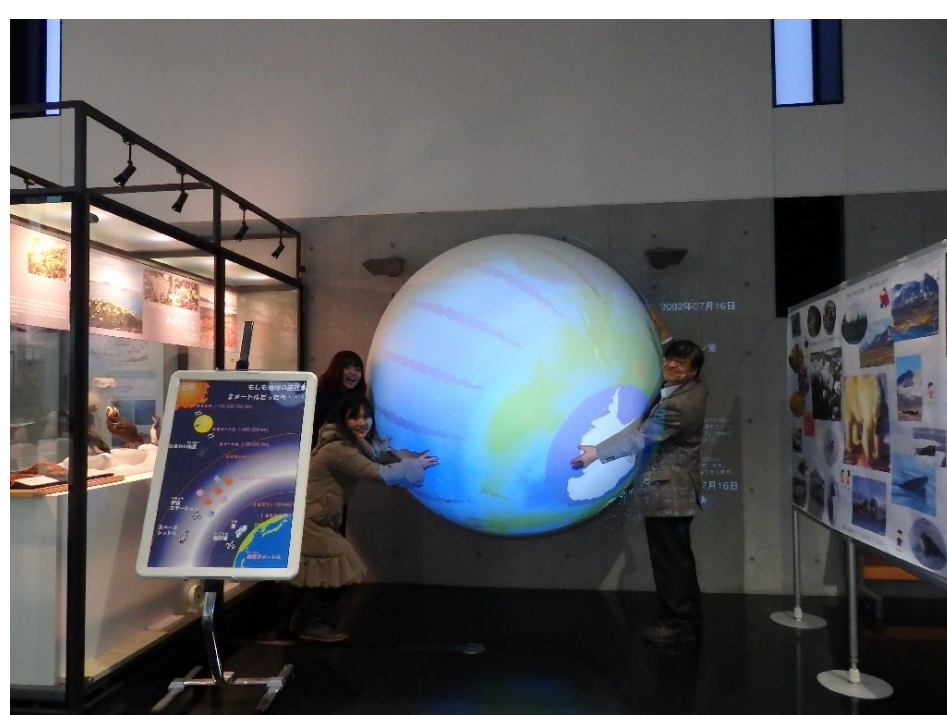
The **3-dimensional CG** and **scientific visualization** are tested and evaluated in many types of immersive VR environment (IVE).

Recent multimedia technology and new computer system such as Raspberry Pi for education and research are discussed in the meetings.

**66<sup>th</sup> @ISM**

**(The Institute of Statistical Mathematics)**

**On 2 Feb. 2015**



**67<sup>th</sup>.**

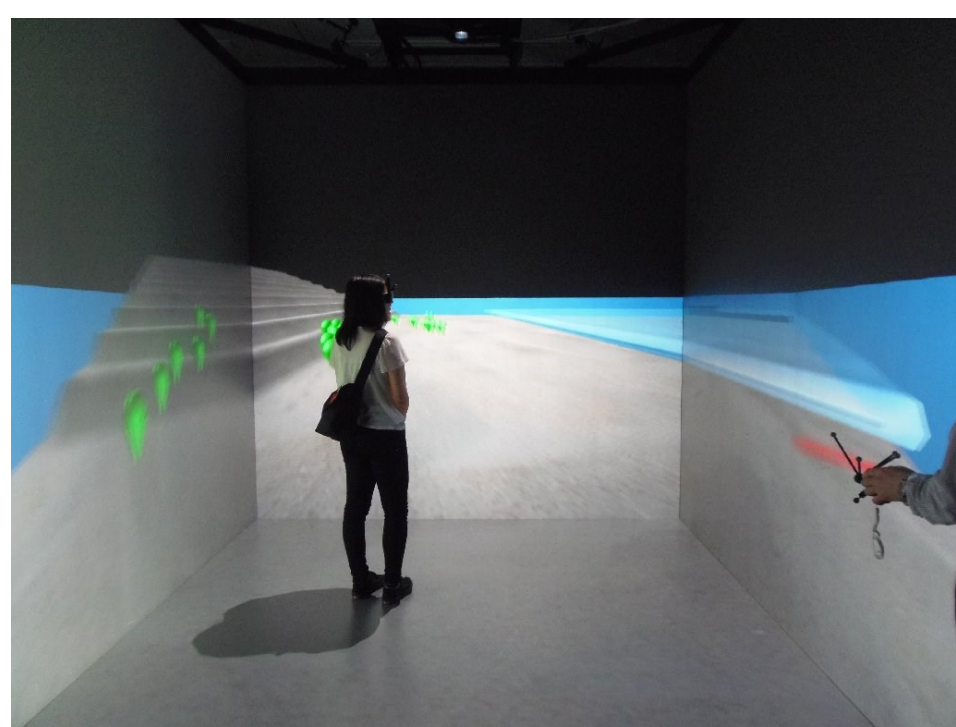
**Cyuo Univ.**

**On 27 Feb. 2015**

**68<sup>th</sup>**

**Joshibi Univ.**

**On 16 June 2015**



**69<sup>th</sup>**

**JAMSTEC**

**On 2 Sep. 2015**

**60<sup>th</sup>**

**Tokai Univ.**

**On 1 Nov. 2015**

